

SMD POWER INDUCTOR

ASPI-0403



RoHS
Compliant



4.5 x 4.0 x 3.2mm

FEATURES:

- High saturation for surface mount
- High current rating for high current circuits
- Special lead wire design to prevent open circuit failure
- Excellent terminal strength construction

APPLICATIONS:

- OA equipments
- PC and notebook
- LCD TV set
- Power supply

STANDARD SPECIFICATIONS:

PARAMETERS

ABRACON P/N:	ASPI-0403 xxxx
Operating temperature:	-40°C to +85°C
Storage temperature:	-40°C to +85°C

Part#	Inductance (μH)	Tol. (%)	RDC (Ω)	IDC (A)
ASPI-0403-1R0M	1.0	M	0.0487	2.56
ASPI-0403-1R4M	1.4	M	0.0562	2.52
ASPI-0403-1R8M	1.8	M	0.0637	1.95
ASPI-0403-2R2M	2.2	M	0.0712	1.75
ASPI-0403-2R7M	2.7	M	0.0787	1.58
ASPI-0403-3R3M	3.3	M	0.0862	1.44
ASPI-0403-3R9M	3.9	M	0.0937	1.33
ASPI-0403-4R7M	4.7	M	0.1087	1.15
ASPI-0403-5R6M	5.6	M	0.1257	0.99
ASPI-0403-6R8M	6.8	M	0.1312	0.95
ASPI-0403-8R2M	8.2	M	0.1462	0.84
ASPI-0403-100K	10	K	0.1820	1.04
ASPI-0403-120K	12	K	0.2100	0.97
ASPI-0403-150K	15	K	0.2350	0.85
ASPI-0403-180K	18	K	0.3380	0.74
ASPI-0403-220K	22	K	0.3780	0.68
ASPI-0403-270K	27	K	0.5220	0.62
ASPI-0403-330K	33	K	0.5400	0.56
ASPI-0403-390K	39	K	0.5870	0.52
ASPI-0403-470K	47	K	0.8440	0.44
ASPI-0403-560K	56	K	0.9370	0.42
ASPI-0403-680K	68	K	1.1170	0.37

Note: Test Frequency is 7.96MHz (1.0μH ~ 8.2μH); 2.52MHz(10μH ~ 68μH)

OPTIONS AND PART IDENTIFICATION:

(Left blank if standard)

ASPI - 0403 - □□□ □ - □

Inductance Code
Please refer to the Table

Tolerance Code	
M	±20%
K	±10%

Packaging	
T	Tape & Reel

ABRACON IS
ISO 9001 / QS 9000
CERTIFIED



ABRACON
CORPORATION

Visit www.abracon.com for Terms & Conditions of Sale **Revised: 12.02.09**
30332 Esperanza, Rancho Santa Margarita, California 92688
tel 949-546-8000 | fax 949-546-8001 | www.abracon.com

SMD POWER INDUCTOR

ASPI-0403

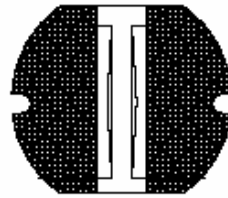
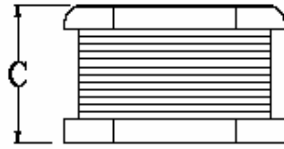
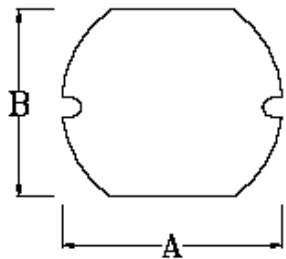


RoHS
Compliant

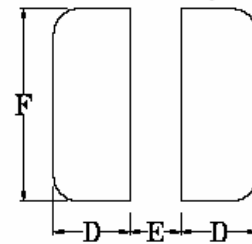


4.5 x 4.0 x 3.2mm

OUTLINE DIMENSIONS:



LAND PATTERNS(mm)

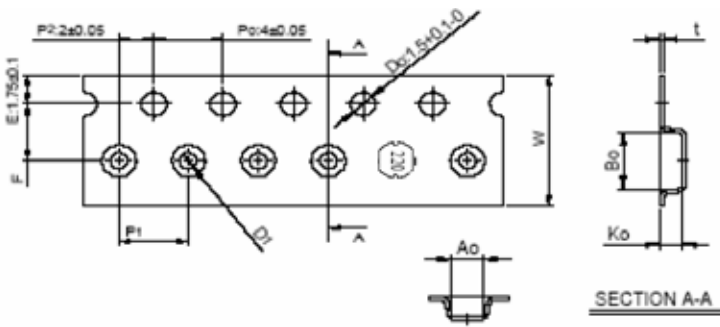


Part#	A	B	C
ASPI-0403-xxx	0.177±0.012	0.157±0.012	0.126±0.012
	(4.5±0.3)	(4.0±0.3)	(3.2±0.3)

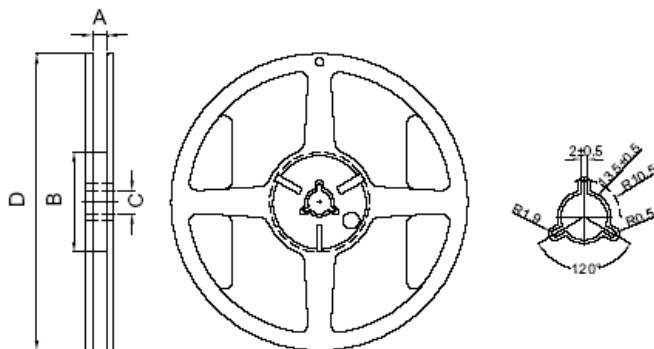
Part#	D	E	F
ASPI-0403-xxx	0.071 ref.	0.059 ref.	0.177 ref.
	(1.8 ref.)	(1.5 ref.)	(4.5 ref.)

Dimension : Inches (mm)

TAPE & REEL: T= tape and reel(

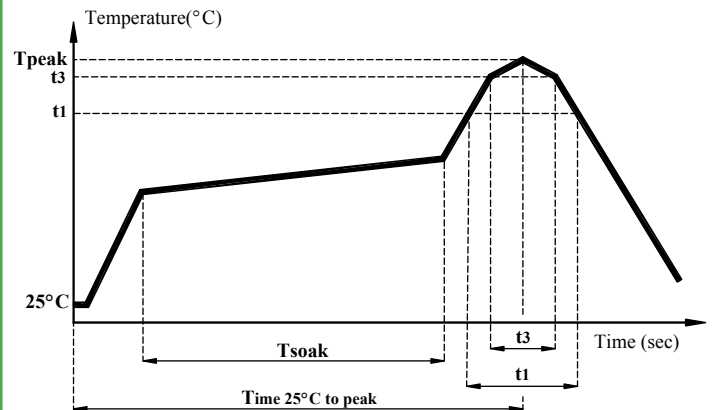


Part#	A0	B0	K0	D1	P1	F	W	t
ASPI-0403-xxx	4.2±0.1	4.8±0.1	3.3±0.1	0	8.0±0.1	5.5±0.1	12.0±0.3	0.4±0.05



Part#	A	B	C	D
ASPI-0403-xxx	12.5±0.5	100±0.5	13.2±0.3	330±1.0

REFLOW PROFILE:



Item	mark	products	
		size ≥ 350mm ³ OR thickness ≥ 2.5mm	size < 350mm ³ or thickness < 2.5mm
Temperature rise gradient		3°C/sec (max)	
Heating time	Tsoak	50s ~ 150s	
Heating temperature		120°C ~ 180°C	
Time over 217°C	t1	70 sec	90 sec
Time within 5°C of actual peak temperature	t3	10~30 sec	10~30 sec
Peak temperature	Tpeak	250 (+0 / -5 °C)	260 (+0 / -5 °C)
Time 25°C to peak Temperature		6 minutes max.	

*The determination, first primarily determines by the size, then determines the altitude.

NOTE: Abracon manufactured products are intended for general commercial and industrial use. For applications requiring high reliability and/or presenting extreme operating environment, written consent & authorization from Abracon is required.

ABRACON IS
ISO 9001 / QS 9000
CERTIFIED



Visit www.abracon.com for Terms & Conditions of Sale **Revised: 12.02.09**
30332 Esperanza, Rancho Santa Margarita, California 92688
tel 949-546-8000 | fax 949-546-8001 | www.abracon.com